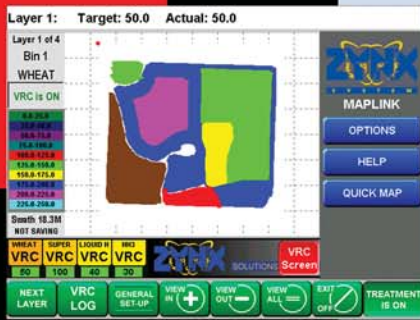


# Variable Rate Control & Mapping



## Variable Rate Control & Mapping

Complementing the range of ZYNX Controller options from KEE Technologies, including Seeding, Spraying and Spreading, is the world class MAPLINK software program which combines the functions of variable rate application of product with prescription maps.

MAPLINK allows you to easily import prescription maps, build your own maps or simply log product application maps and elevation maps.

Capable of handling numerous file formats, ZYNX MAPLINK is one of the most versatile products on the market and is able to control seeding, spraying and spreading applications, all with individual bin/tank inputs.

With ZYNX MAPLINK you can tackle the high-end of precision farming practises with one console that can create, control and log as well as steer and shut on and off specific pieces of machinery.

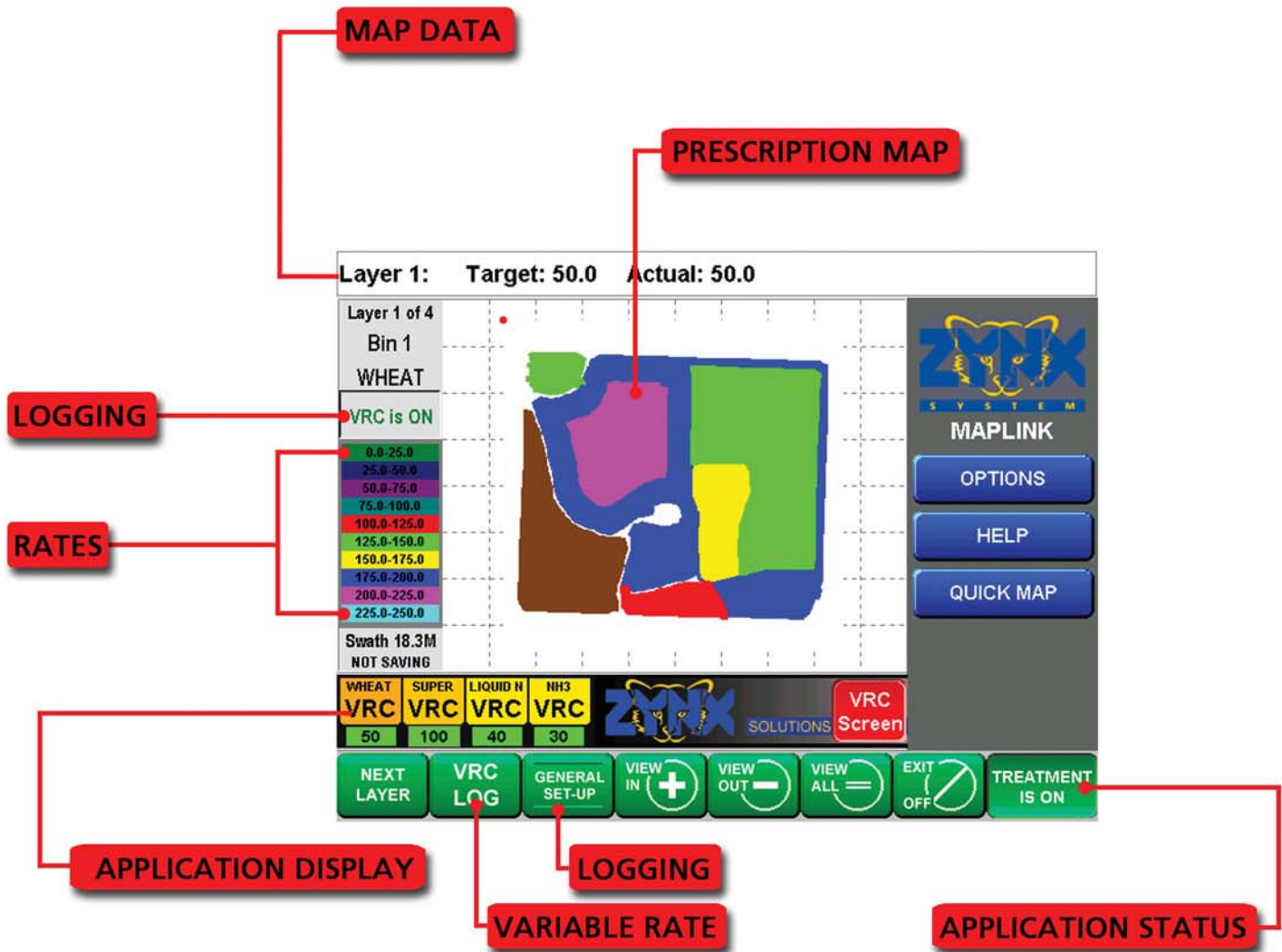
ZYNX MAPLINK is compatible with both GPS and DGPS receivers and offers accuracy from entry-level GPS through DGPS free-to-air marine beacon and WAAS (where available) and subscription systems (including OmniSTAR VBS and HP), to Real-time Kinetic (RTK) radio systems offering a range of positioning accuracy to meet any application.

Building prescription and elevation maps is as easy as driving around the field and the areas requiring different inputs and then creating a template, to which the user can add colors, rates and jobs done. Another valued feature is the option to lock the operator out of being able to change the program settings so that it can be assured that the rates set before application are the same rates applied.

Program six(6) prescription layered maps and log six(6) application layers, plus an elevation map, simultaneously. Prescription and application maps can be saved, imported into other application programs, printed or even emailed using standard Windows® programs (additional hardware or software may be required).



# Variable Rate Control and Mapping



## Features

- Measurements in Metric, US or Imperial units
- Live application and logging maps
- Create your own maps or import Shape, PAM, VRC files, Case IH, JD, SST, Bitmaps, GDX and more
- Change rates on the run or lock operator out
- Build your own maps with the onboard quick map program
- Easy to use simple to operate
- Up to 13 maps can be active simultaneously, including 6 layers of Logging plus Elevation
- These 6 layers can also contain Prescription maps to control up to 6 tanks.
- Log all work performed for records
- Gradually advance from generating Prescription Maps for all work performed
- Interactive flagging of obstacles
- Automatic Section Control (ASC)
- Optional Sectional Sensing
- Simple Data Transfer